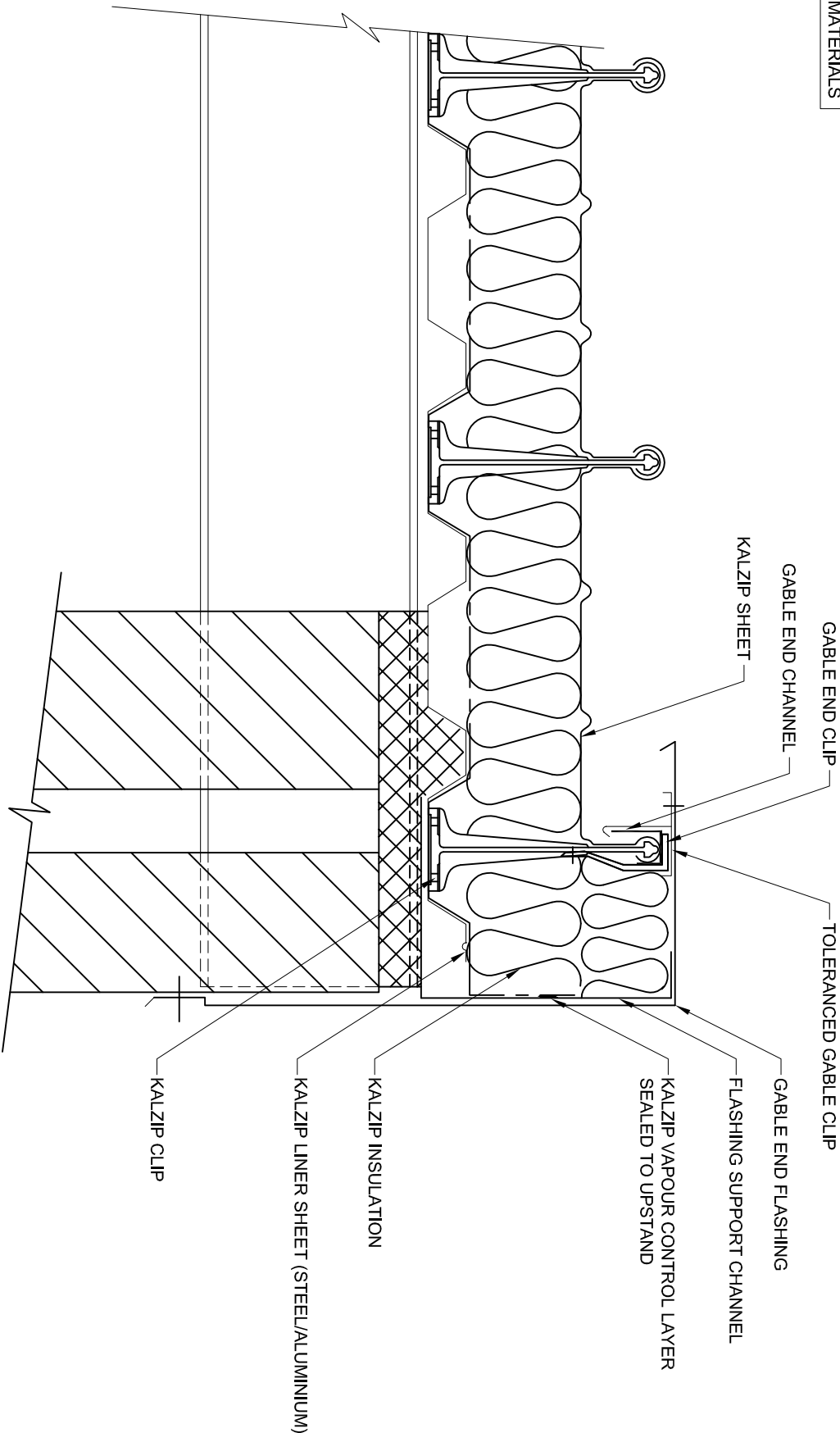


Notes

- 1. All Dims in mm Unless Otherwise Stated
- 2. Do Not Scale From This Drawing
- 3. Isolate All Dissimilar Materials With Barrier Tape
- 4. If in Doubt, ASK

NOTE:
ISOLATION TAPE REQUIRED
BETWEEN ALUMINIUM AND
ALKALI-BEARING MATERIALS



REFER TO DRG No. STD-3-01 FOR KALZIP GABLE FIXING DETAIL AND FLASHING DIMENSIONS

Project: Double Skin Constructions			
Client: Kalzip Ltd.			
Title: Double Skin Gable Detail To Wall			
Scale: 1:5	Date: 20/07/05	Drawn: KRT	Checked:
Dwg No. KAL-0-DS-L-4-006			Rev: F

This drawing is copyright and is issued on the express condition that it is not to be copied or disclosed by or to any unauthorised person or firms without prior consent in writing from Kalzip.

Haydock Lane, Haydock, St. Helens
MERSEYSIDE, WA11 9TY
Tel: 01942 295 500
Fax: 01942 295 508

